

Instruction Sheet

Follow these instructions to install the Probe Bracket in Tube Fryers.

*** NOTE: If the tubes are allowed to cool, a wrench or hand may be used in place of the tool to hold the bottom bracket in place when tightening.**

1. Turn off the fryer.
2. Drain the oil from the frypot and allow the fryer tubes to cool.
3. Using the photo as a reference for orientation, slide the the probe bracket on the bolt (see Figure 1). Use the 6" bolt for 6" HD Tubes. Use the 4" bolt for 4" Non-HD tubes Use the 5.5" bolt for 5" Non-HD Tubes.
4. Using the photo as a reference for orientation, screw the bottom guard assembly into the bolt (see Figure 2).
5. **Using pliers, twist the pliers and distort the last two threads of the bolt, so the nut resists unscrewing (see Figure 3). WARNING: Skipping this step can allow the bracket to loosen and fall off, which may cause damage if caught in the drain.**
6. Tighten the nut until there is resistance on the bottom threads. (see Figure 4). **Ensure the nut is tightened against the marred threads.**
7. Insert the bracket vertically, starting at the front of the frypot as shown (see Figure 5).
8. Reaching under the bracket, rotate the lower guard shown in Figure 2 sideways to form a "T" on the bottom of the tubes.

Subject: 8263844 Tube Fryer Probe Bracket Kit Instructions

12.11.2024

In This Kit		
Part #	Description	Qty
130256362	BOLT, ¼-20 X 6" SS	1
130252845	BOLT, ¼-20 X 5.5" SS	1
130252846	BOLT, ¼-20 X 4" SS	1
130256360	GUARD, SENSOR BOTTOM WELD ASSY	1
130252836	BRACKET WELDMENT	1
8198060	PROBE BRACKET KIT INSTRUCTIONS	1



Figure 1



Figure 2

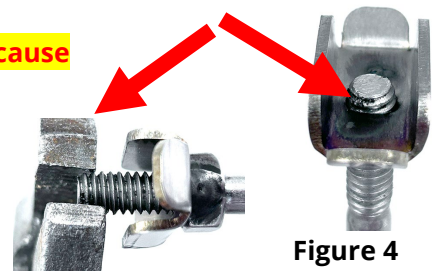


Figure 3

Figure 4



Figure 5

9. Line up the assembly with the probe opening 2-1/8" from the front of the frypot and the probe opening at the bottom of the frypot. Using a flashlight may help align the bracket (see Figures 6 & 7).

10. Lift up slightly on the bracket on the opposite end of the bolt to put pressure on the bracket and tighten the bolt snug to the tubes (see Figure 8). **Ensure the bolt is tightened snug to the tubes and is not loose.**

11. Install the probe in the bracket (see Figure 9).

12. Lift up on the tab to secure the probe (see Figure 9).

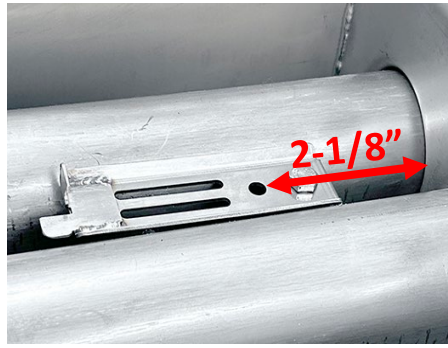


Figure 6

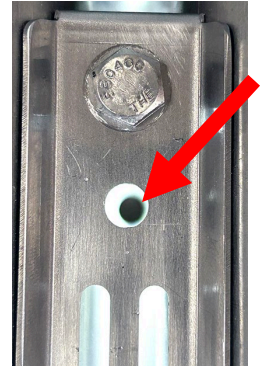


Figure 7

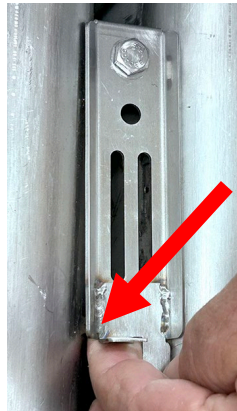


Figure 8

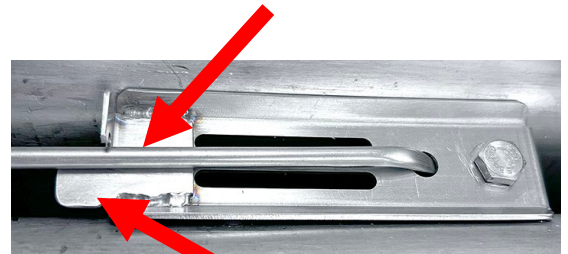


Figure 9